



**Maria De Angelis**  
 +267 72 469 838  
 maria.deangelis@seeff.com



**Letso Palai**  
 +267 77 075 986  
 letso.palai@seeff.com

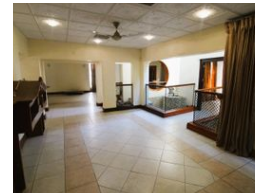
Contact Botswana

267 3939372

Plot 43173 Phakalane, Gaborone  
 393 9372



Web Ref MDA5768



**BWP6,500,000**

4 4 2

Prime Location and so much potential

MDA5768

This expansive property in the central location of Universal Estate Block 6 is a great investment opportunity and the perfect home for a large family. Offering a double plot with a lovely spacious home that is well laid out.

With 4 bedrooms and 4 bathrooms it is a very comfortable home. With only a few upgrades required to convert it into a spectacular home makes it a must see.

Walk into the main living room with extra high ceilings and large bright windows all the way up to the ceiling, plus a unique feature as you enter. Alongside the dining room is a prayer room or study and as you walk to the dining room into the large kitchen plus scullery and pantry. This is all downstairs near the guest wing with an ensuite bathroom. There is also a guest loo downstairs as well. Going upstairs you have the tv room which has...

## Features

**Pets Allowed** Yes

<b>Interior</b>	
Bedrooms	4
Bathrooms	4
Kitchens	1
Recep. Rooms	3
Studies	1
Furnished	No

<b>Exterior</b>	
Garages	2
Security	Yes
Dom. Accom.	1
Pool	Yes
Views	False

<b>Sizes</b>	
Floor Size	1,050m <sup>2</sup>
Land Size	2,100m <sup>2</sup>

