

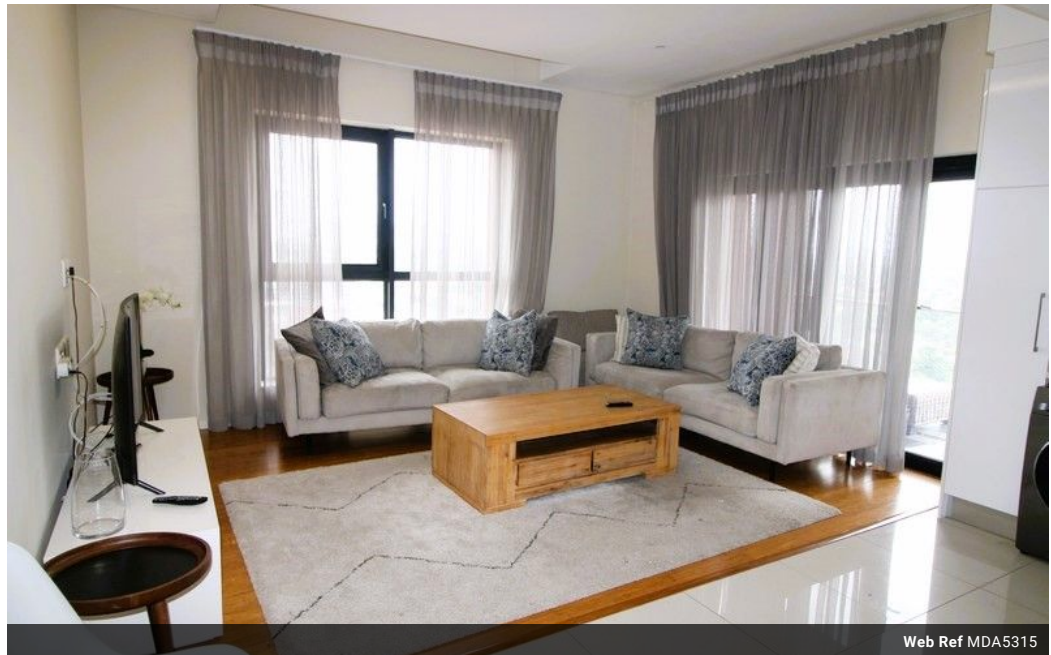


**Maria De Angelis**  
 +267 72 469 838  
 maria.deangelis@seeff.com

Contact Botswana

267 3939372

Plot 43173 Phakalane, Gaborone  
 393 9372



Web Ref MDA5315



**BWP2,200,000**

Monthly Levy BWP1,500



Central modern apartment close to shops, entertainment and offices.

MDA5315

Central modern apartment close to shops, entertainment and offices. For the discerning business man. 1 Bedroom, 1 bathroom, kitchen equipped with fridge, microwave, washing machine plus oven and hob. Unit comes with reserved basement parking. Walking distance to the shops, entertainment, business centre and all the facilities.

Clients are welcome to call any Seeff agent to assist with their Property enquiries.

## Features

Interior		Exterior		Sizes	
Bedrooms	1	Garages	1	Floor Size	73m <sup>2</sup>
Bathrooms	1	Security	Yes		
Recep. Rooms	2	Pool	No		
Studies	1	Views	False		
Furnished	Yes				

