



Kim Bekker
+267 71 630 755
kim.bekker@seeff.com



Palma Mokibe
+267 76 450 393

palma.mokibe@seeff.com

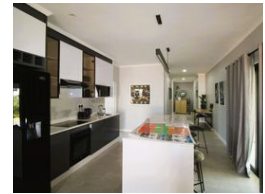
Contact Botswana

267 3939372

Plot 43173 Phakalane, Gaborone
393 9372



Web Ref PM5442



BWP2,699,884

4 2 1

Sesha Mews - Secure, family-friendly, low density housing estate in Kgale

*** OFF-PLAN SALES *** NEW DEVELOPMENT ***

Sesha Mews is conveniently located in Kgale within close proximity to shopping centres, medical facilities, schools, and good transport routes, Sesha Mews offer off-plan sales of 3 and 4 bedroomed homes. Ideal for young families and first-time buyers, there are 4 designs to choose from and a host of optional finishes from roof coverings, paint colours, floor tiles and whether you would like an additional scullery or garage. You can personalise your home to your specification and budget. The complex is designed to be low to medium density so you can enjoy space and privacy while still benefiting from the secure environment the complex provides. Security features include a perimeter boundary wall, electric fence and 24-hour manned, access controlled entrance. For families and outdoor...

Features

Interior		Exterior		Sizes	
Bedrooms	4	Garages	1	Floor Size	173m ²
Bathrooms	2	Carports / Parkings	1		
Kitchens	1	Security	Yes		
Recep. Rooms	2	Pool	No		
Furnished	No	Views	False		

