



**Kim Bekker**  
+267 71 630 755  
kim.bekker@seeff.com



**Maria De Angelis**  
+267 72 469 838

maria.deangelis@seeff.com

Contact Botswana

267 3939372

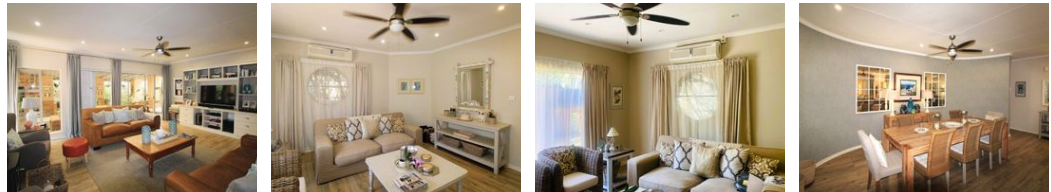
Plot 43173 Phakalane, Gaborone  
393 9372



UNDER OFFER

SOLE MANDATE

Web Ref KB5886



**BWP3,700,000**

4   3   2

Tastefully renovated , offers an elegant formal lounge, and an open plan family living area.

KB5886

The living area has great flow and comprise the dining section, the family TV room and the open plan spacious and functional kitchen. The Morso fireplace adds warmth to the whole area and home in the cold winter months. The kitchen is simply divine with ample space and fitted with double electric ovens and a gas cooker and with a pantry. The sliding doors from the family area leads to a covered all weather veranda which is fitted with a braai and adequate space for settees and outdoor dining . The home is surrounded by exquisite and loved gardens and a pristine pool . The bedrooms are all well appointed and with sizeable wardrobes. 2 bedrooms are en-suite and two bedrooms share. All bathrooms are very well appointed and stylish to complement the home. In addition is a staff room or study , a double...

### Features

Pets Allowed		Yes			
Interior		Exterior		Sizes	
Bedrooms	4	Garages	2	Floor Size	334m <sup>2</sup>
Bathrooms	3	Carports / Parkings	1	Land Size	1,075m <sup>2</sup>
Kitchens	1	Security	Yes		
Recep. Rooms	3	Dom. Accom.	1		
Studies	1	Pool	Yes		
Furnished	No	Views	False		

### Extras

Built In Braai 5 Grey water Jojos Outdoor Beams Cameras Alarm System

