



Maria De Angelis
 +267 72 469 838
 maria.deangelis@seeff.com



Lebe Kgosidialwa
 +267 72 553 786

lebe.kgosidialwa@seeff.com

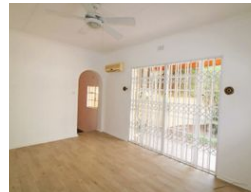
Contact Botswana

267 3939372

Plot 43173 Phakalane, Gaborone
 393 9372



Web Ref MDA5580



BWP5,900,000

3 2

Unique property located in the Central Village, offering an ideal blend of convenience and developme

MDA5580

Situated within walking distance to various amenities such as restaurants, shopping centers, medical facilities, and workplaces, this property offers a desirable location for residents and potential developers alike.

The property has recently been re-zoned as Multi Residential, opening up exciting opportunities for developers to create a different type of development on the land. Currently, the property features a well-built, bright, and spacious residential 3-bedroom family home. The main living area boasts a sun lounge, a formal lounge with a cozy fireplace, a kitchen, a dining room, and a bar area for entertaining guests.

The living areas overlook a large pool, providing a refreshing and relaxing atmosphere for outdoor gatherings. The spacious garden is equipped with a children's play area and a jungle gym, making it...

Features

Pets Allowed		Exterior		Sizes	
	Yes	Carports / Parkings	2	Land Size	2,070m ²
Interior		Security	Yes		
Bedrooms	3	Dom. Accom.	1		
Bathrooms	2	Pool	Yes		
Kitchens	1	Views	False		
Recep. Rooms	3				
Furnished	No				

Extras

cottage Backup Water Carport Electric Fencing

