



**Kim Bekker**  
 +267 71 630 755  
 kim.bekker@seeff.com

Contact Botswana

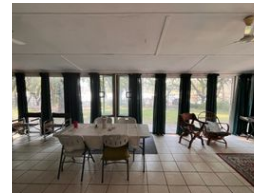
267 3939372

Plot 43173 Phakalane, Gaborone  
 393 9372



SOLE MANDATE

Web Ref KB5784



## POA

3    2

### Prime Location Investment Property with Development Potential in Maun, Botswana

Calling all discerning investors! This exceptional property presents a unique opportunity to acquire a well-established residential holding in a prime location overlooking the Thamalakane River.

Location, Location, Location:

- Situated in Sedie Ward, Maun, just a stone's throw from Marc's Eatery.
- Prime position along the Thamalakane Riverbanks, offering stunning views and abundant birdlife.
- Approximately 4km from Maun's Central Business District, ensuring easy access to all amenities.

Development Potential:

- This expansive plot of 8787sqm offers ample space for further development, ideal for investors seeking to capitalize on Maun's growing residential market.

Established Houses and Cottages:

- The property boasts several well-maintained houses and cottages, perfect for generating rental income or providing comfortable...

## Features

### Interior

Bedrooms	3
Bathrooms	2
Kitchens	1
Recep. Rooms	2
Furnished	No

### Exterior

Security	No
Dom. Accom.	1
Pool	No
Views	False

### Sizes

Floor Size	500m <sup>2</sup>
Land Size	8,787m <sup>2</sup>

