



**Palma Mokibe**  
 +267 76 450 393  
 palma.mokibe@seeff.com



**Lebe Kgosidialwa**  
 +267 72 553 786

lebe.kgosidialwa@seeff.com

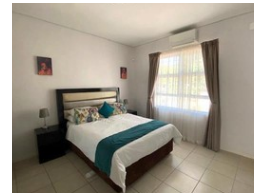
Contact Botswana

267 3939372

Plot 43173 Phakalane, Gaborone  
 393 9372



Web Ref DMM4898



**BWP20,250 pm**

Lease Period 24 months  
 Annual Escalation -

Availability Immediately

Deposit -



Upmarket Apartments in the heart of the City!

PMM4898

Located in one of the oldest and safest areas of Gaborone just one street from the President's residence are these lovely fully furnished and serviced units, tastefully done and very private with spacious rooms, fully equipped kitchen, comfortable lounge, private balcony or downstairs unit with private garden. Ideally suited towards business visitors who require a central location and easy lock up and go. There is a communal pool and lapa surrounded by beautiful gardens and stunning trees offering a quiet and peaceful environment! You won't be disappointed.

Rates all-inclusive for fully furnished apartment including water, electricity, WIFI, secure parking bay, DSTV full premium package, smart enabled TV with Netflix, Amazon Prime and a host of other apps, fully serviced by our house-keepers at least 3x a week, access...

### Features

#### Interior

Bedrooms	1
Bathrooms	1
Kitchens	1
Recep. Rooms	2
Furnished	Yes

#### Exterior

Carports / Parkings	2
Security	Yes
Pool	Yes
Views	False

#### Extras

Built-in Wardrobes, Built-in Kitchen Appliances, Covered Parking, Shared Pool

