



Maria De Angelis
+267 72 469 838
maria.deangelis@seeff.com



Sego Ramolefhe
+267 77 123 889

segomotso.ramolefhe@seeff.com



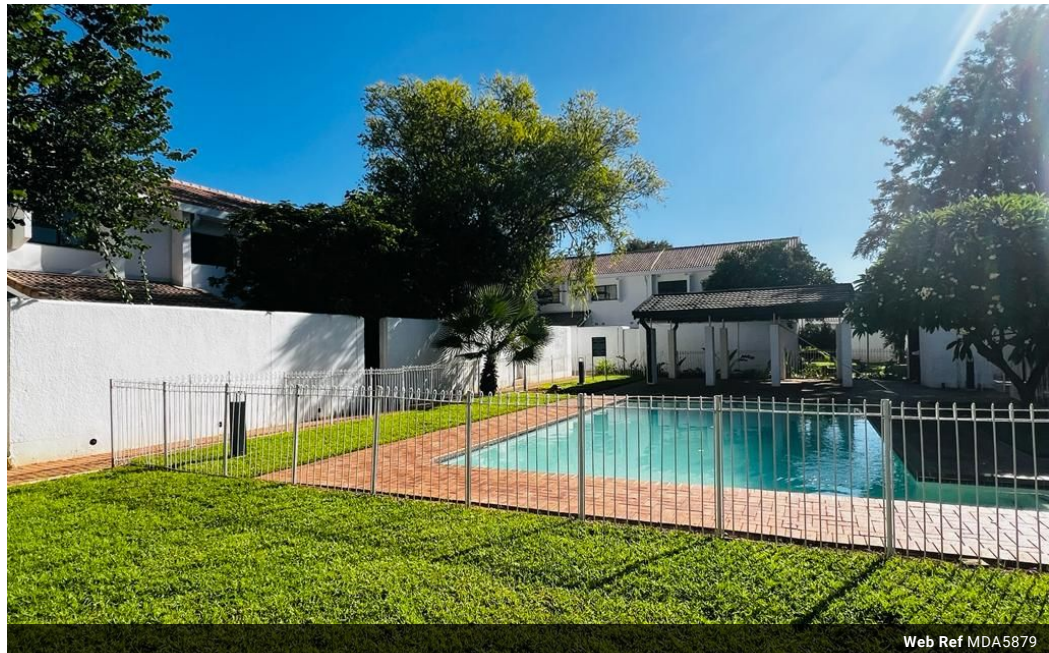
Palma Mokibe
+267 76 450 393

palma.mokibe@seeff.com

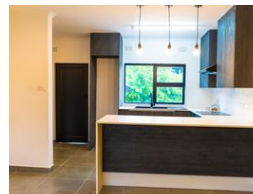
Contact Botswana

267 3939372

Plot 43173 Phakalane, Gaborone
393 9372



Web Ref MDA5879



BWP9,250 pm

Lease Period 24 months
Annual Escalation -

Availability Immediately

Deposit -



Lovely home in the heart of the city

MDA5879

This ground floor apartment offers peace and tranquility with modern finishes. Airy and bright lounge area with a spacious dining that has a flowy area into the backyard area.

An open but fully fitted kitchen with a gorgeous in built breakfast nook, 4 burner electric stove with oven and extractor, a double sink with a movable mixer, ample cupboard storage space, allowance for a washing machine and/or dishwasher.

A rustic wooden staircase lands into the bedroom area, bedroom is fully fitted and is air conditioned with a beautiful common bathroom that has a walk in shower.

Added features: A private garden area, a common pool and clubhouse area, 24hr security, 1 cover + 1 uncovered parking bay.

Clients are welcome to call any Seeff agent to assist with their Property enquiries.

Features

Interior

Bedrooms	1
Bathrooms	1
Kitchens	1
Recep. Rooms	1
Furnished	No

Exterior

Carports / Parkings	1
Security	Yes
Pool	Yes
Views	False

