



Maria De Angelis
+267 72 469 838
maria.deangelis@seeff.com



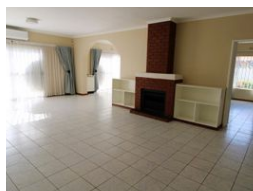
Lebe Kgosidialwa
+267 72 553 786

lebe.kgosidialwa@seeff.com

Contact Botswana

267 3939372

Plot 43173 Phakalane, Gaborone
393 9372



BWP25,000 pm

Lease Period 24 months
Annual Escalation -

Availability Immediately

Deposit -

4 2 2

Excellent Location

MDA5975

Discover exquisite living in this beautifully designed and presented 4-bedroom house located in the sought-after Gaborone West Phase 1. This spacious and stylish home offers the perfect blend of comfort, security, and luxury.

Features Include:

Large open plan living and dining area

Separate TV room or study.

Large Open-plan lounge and dining area with elegant finishes

Fully fitted kitchen with pantry and space for washer.

4 generously sized bedrooms with built-in wardrobes and fully air conditioned

Master en-suite with modern fittings

Sparkling fenced swimming pool – overlooked by a covered patio ideal for relaxing or entertaining

Features

Pets Allowed		Yes	
Interior		Exterior	
Bedrooms	4	Garages	2
Bathrooms	2	Security	Yes
Kitchens	1	Dom. Accom.	1
Recep. Rooms	2	Pool	Yes
Studies	1	Views	False
Furnished	No		

