



**Maria De Angelis**  
+267 72 469 838  
maria.deangelis@seeff.com



**Lebe Kgosidialwa**  
+267 72 553 786

lebe.kgosidialwa@seeff.com

Contact Botswana

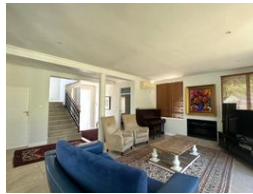
267 3939372

Plot 43173 Phakalane, Gaborone  
393 9372

RENTED



Web Ref MDA5930



**BWP30,000 pm**

Monthly Levy BWP1,850

Lease Period 24 months

Availability Immediately

Deposit - Annual Escalation -

4 3 2

Delightful Family Home overlooking the fairways.

MDA5930

Clean, neat bright - just great for the family. Open plan kitchen, lounge, dining opening to a large covered veranda by the pool. 1 Bedroom ensuite is downstairs and three are upstairs, the main is ensuite and 2 smaller bedrooms share a bathroom. The landing offers the space for a hobby or study area. In addition offers well appointed staff room, a storeroom and 2 lock up garages which all complement this lovely home. Security and air conditioning also included.

## Features

**Pets Allowed** Yes

### Interior

Bedrooms	4
Bathrooms	3
Kitchens	1
Recep. Rooms	2
Studies	1
Furnished	No

### Exterior

Garages	2
Security	Yes
Dom. Accom.	1
Pool	Yes
Views	True

