



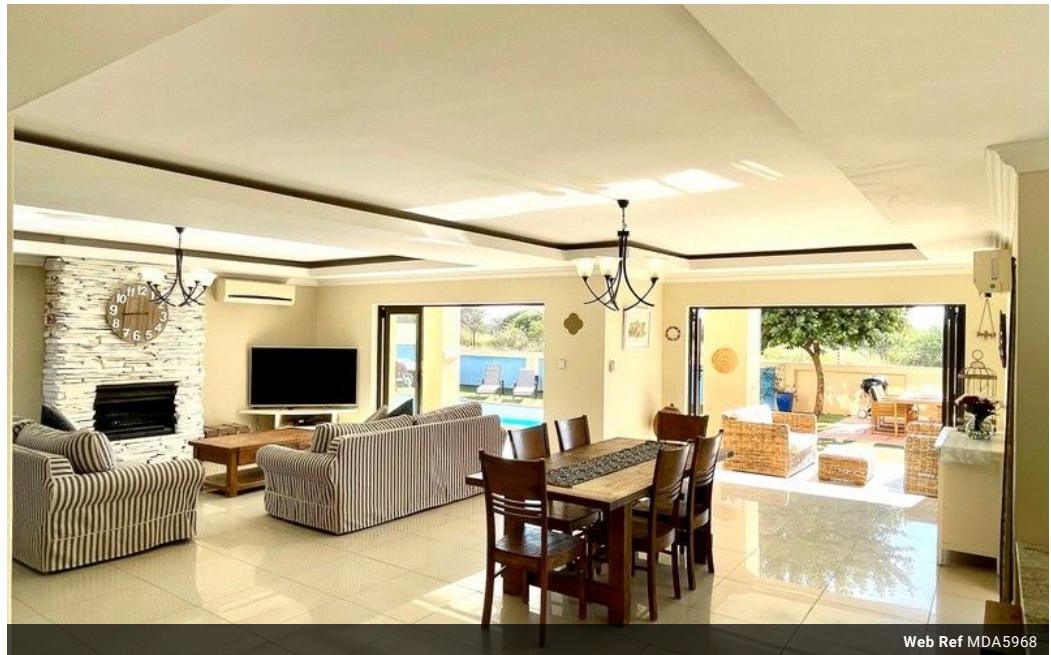
**Maria De Angelis**  
+267 72 469 838  
maria.deangelis@seeff.com



**Kim Bekker**  
+267 71 630 755  
kim.bekker@seeff.com

Contact Botswana  
267 3939372

Plot 43173 Phakalane, Gaborone  
393 9372



Web Ref MDA5968



**BWP30,000 pm**

Monthly Levy BWP1,850    Lease Period 24 months    Availability 21 May 2025  
Deposit -    Annual Escalation -

4    4    2

### Spectacular Bush Views

MDA5968

This charming, well kept home is set in the best location, excellent security within the popular Phakalane Golf Estate. Boasting generous accommodation, 4 ensuite bathrooms, study or home office, a lovely fitted kitchen with scullery and walk in pantry, ample entertainment space overlooking a sparkling heated pool set in landscaped low maintenance garden. Also on offer is a staff quarters, double garage and double carport. The perfect family home!

### Features

<b>Pets Allowed</b>	Yes		
<b>Interior</b>		<b>Exterior</b>	
Bedrooms	4	Garages	2
Bathrooms	4	Carports / Parkings	2
Kitchens	1	Security	Yes
Recep. Rooms	4	Dom. Accom.	1
Studies	1	Pool	Yes
Furnished	No	Views	True

