



Palma Mokibe
+267 76 450 393
palma.mokibe@seeff.com



Letso Palai
+267 77 075 986
letso.palai@seeff.com

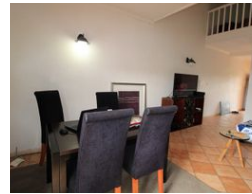
Contact Botswana

267 3939372

Plot 43173 Phakalane, Gaborone
393 9372



Web Ref PM5947



BWP4,800 pm

Monthly Levy BWP970

Lease Period 24 months

Availability Immediately

Deposit - Annual Escalation -



Stylish 1 bedroom loft in Phakalane

PM5947

The 1 bedroom loft provides open concept living spaces that blends in modern design with functional living. The living room, dining and kitchen are integrated into a single living space creating a good flow of space. The bedroom has been elevated to overlook the main living space via stairs giving extra privacy while maintaining an open connection to the rest of the unit.

To the complex, there is a clean inviting swimming pool, lovely garden and neighborhood views to enjoy from the balcony and there is a 24 hour security guards at the gate to give you some safety and security you need.

Clients are welcome to call any Seeff agent to assist with their Property enquiries.

Features

Interior

Bedrooms	1
Bathrooms	1
Kitchens	1
Recep. Rooms	2
Furnished	No

Exterior

Carports / Parkings	1
Security	Yes
Pool	Yes
Views	False

