



**Palma Mokibe**  
+267 76 450 393  
palma.mokibe@seeff.com



**Lebe Kgosidialwa**  
+267 72 553 786

lebe.kgosidialwa@seeff.com

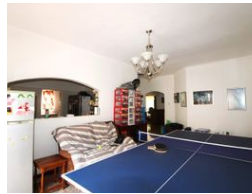
Contact Botswana

267 3939372

Plot 43173 Phakalane, Gaborone  
393 9372



Web Ref PM5943



**BWP12,000 pm**

Monthly Levy BWP400

Lease Period 24 months

Availability 01 Apr 2025

Deposit - Annual Escalation -

3 2 2

Gated estate, large yard and functional home

PM5943

This home is in a big yard which is suitable for family with a lot of cars, small children and pets. It has a lovely frontage covered with lawn and a covered veranda for you to sit at, entertain by the pool and have a braai. The house has 3 bedrooms with an ensuite, 2 lounges, dining space, guest toilet and a spacious pantry. Externally you have a staff house, double garage and plenty parking space for extra vehicles. The home is secured in the good area in Phakalane Phase 1, stone's throw away from Mowana Mall. Come secure this home for the 1st April 2025.

### Features

**Pets Allowed** Yes

#### Interior

Bedrooms	3
Bathrooms	2
Kitchens	1
Recep. Rooms	3
Furnished	No

#### Exterior

Garages	2
Security	Yes
Dom. Accom.	1
Pool	Yes
Views	False

