



Letso Palai
+267 77 075 986
letso.palai@seeff.com



Palma Mokibe
+267 76 450 393

palma.mokibe@seeff.com

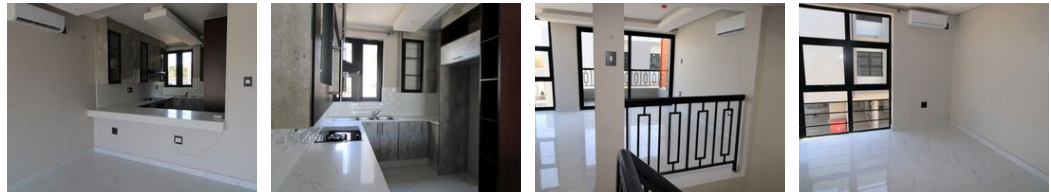
Contact Botswana

267 3939372

Plot 43173 Phakalane, Gaborone
393 9372



Web Ref LP5792



BWP13,980 pm

Lease Period 24 months
Annual Escalation -

Availability Immediately

Deposit -

3 2

Modern finishes and top -class security

LP5792

Located in walking distance to Acacia Mall, Schools, Medical Facilities, and other amenities.

Complex of 20 Townhouses with a communal entertainment area, pool, games room with braai and landscaped gardens throughout. Under cover parkings and extra parking for guests and state of the arts security comprising cameras, beams, electric fence and access control.

Each 3 storey Townhouse Villa offers :

Ground Floor -One under cover parking with a front garden leading into the Villa: open plan lounge /dining and fitted kitchen with gas cooker and opening out to a small private landscaped garden. In addition is a guest toilet and under stairs utility area for additional storage with connections for laundry appliances.

On the first floor are 2 bedrooms sharing a full bathroom and the main bedroom ensuite has a balcony. All...

Features

Interior

Bedrooms	3
Bathrooms	2
Kitchens	1
Recep. Rooms	2
Furnished	No

Exterior

Carports / Parkings	2
Security	Yes
Pool	Yes
Views	False

